

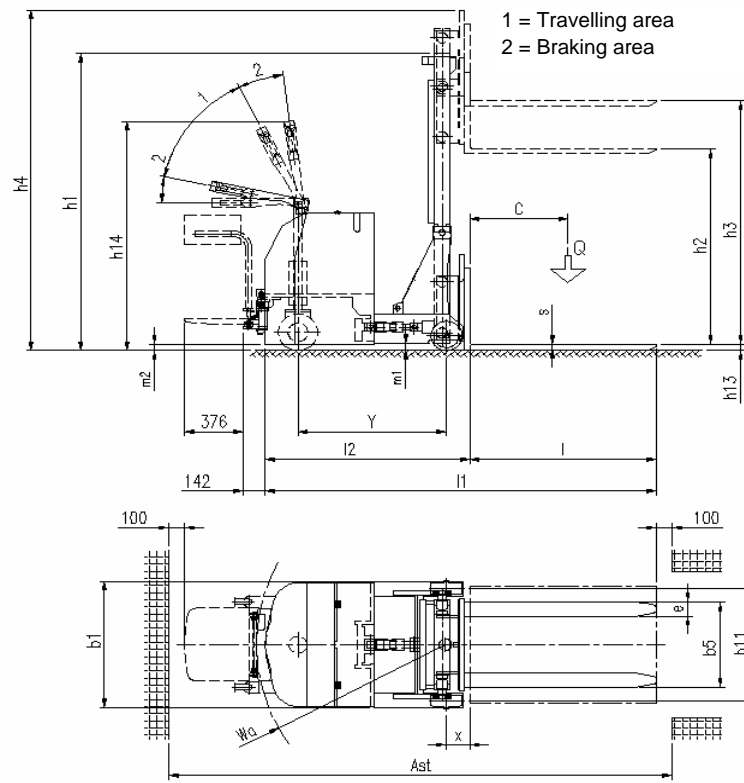
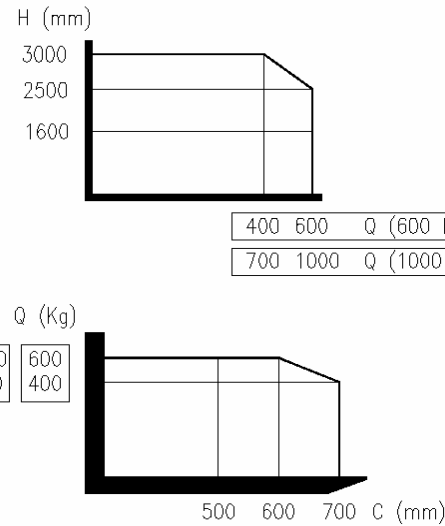
## ELECTRIC COUNTERBALANCED STACKER

The logo for FAC, featuring the letters 'FAC' in a bold, black, sans-serif font. A red square is positioned above the 'F', and a red horizontal bar is located below the 'A' and 'C'.

**SBC**  
600/1.500 Kg.  
H. 1.600/3.000 mm.

Electric counterbalanced stacker

The FAC logo, identical to the one in the top left, featuring the letters 'FAC' in bold black font with red accents.



SBC

<b>Identification</b>	1.1	Manufacturer	FAC s.r.l.		
	1.2	Type	SBC (Q = 0,6 - 1,0 t)		
	1.3	Drive	electric		
	1.4	Type of operation	pedestrian		
	1.6	Load centre distance	c (mm)	600	
	1.8	Load distance, centre of drive axle to fork	x (mm)	150	
	1.9	Wheelbase	y (mm)	954	
	<b>Wheels, Chassis</b>	3.1	Tyres	polyurethan	
		3.2	Front tyres size	(mm)	250 x 100
3.3		Rear tyres size	(mm)	200 x 80	
3.5		Wheels number front/rear (x = driven wheels)		1x+2	
3.7		Track width, rear	b11 (mm)	768	
<b>Basic Dimensions</b>		4.9	Tiller height in drive position min/max	h14 (mm)	1010/1570
		4.15	Forks lowered height	h13 (mm)	40
	4.19	Overall length	l1 (mm)	2510	
	4.20	Length to face of forks	l2 (mm)	1310	
	4.21	Overall width	b1 (mm)	870	
	4.22	Forks dimensions	s/e/l (mm)	35/100/1200	
	4.23	Fork carriage in compliance with DIN 15173 Classe/Form A, B		FEM II A	
	4.25	Width over forks	b5 (mm)	200/620	
	4.31	Must ground clearance (with load)	m1 (mm)	50	
	4.32	Ground clearance, centre of wheelbase	m2 (mm)	40	
	4.34	Aisle width for pallets 800x1200 lenghtways	ast (mm)	2670	
	4.34	Aisle width for pallets 800x1200 lenghtways '	ast (mm)	3230	
	4.35	Turning radius	wa (mm)	1215	
	<b>Performance data</b>	5.1	Travel speed, laden/unladen	km/h	3/5
		5.2	Lift speed, laden/unladen	m/s	0,11/0,21
5.3		Lowering speed, laden/unladen	m/s	0,1/0,2	
5.8		Max. gradient performance, laden/unladen	%	4/6	
5.10		Service brake		electric	
<b>Motor</b>		6.1	Drive motor rating S <sub>2</sub> 60 min	Kw	1,3 (Q = 0,6 t) -1,7 (Q = 1,0 t)
	6.2	Lift motor rating at S <sub>3</sub> 15%	Kw	2,2	
	6.3	Battery acc. To DIN 43531/35/36 A,B,C		no	
	6.4	Battery voltage, nominal capacity K5	V/Ah	24V/160-240 Ah	
	6.5	Battery weight	Kg	170/210	
<b>Others</b>	8.1	Battery dimensions	L/P/H (mm)	810/210/450	
	8.1	Type of drive control		electronic	

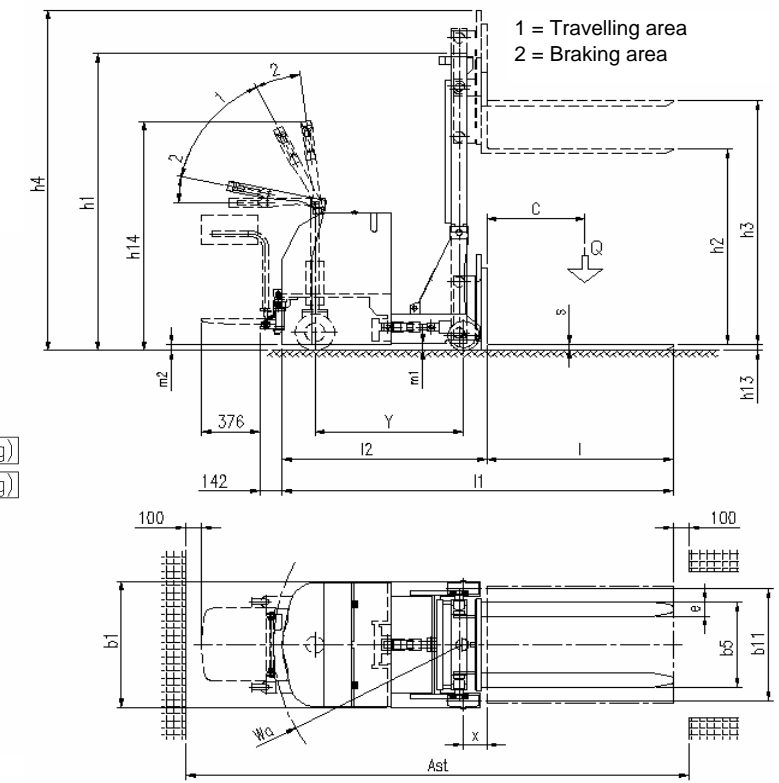
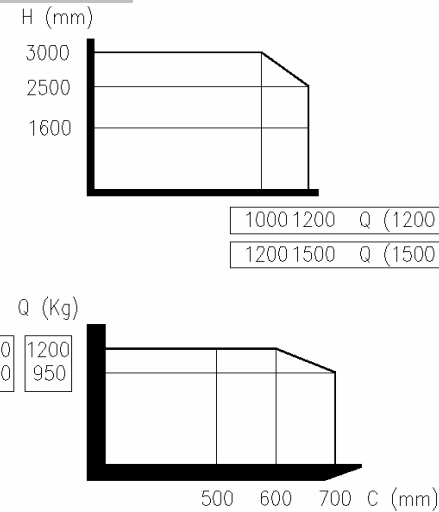
\* Aisle width with stand-on platform (optional on request)

	MODEL	1606	2506	3006	1610	2510	3010
1.5 Capacity, load	Q (t)	0,6	0,6	0,6	1,0	1,0	1,0
2.1 Service weight	Kg	1350	1405	1420	1570	1630	1650
4.1 Lifting assembly tilting (forward/backward)	Grad (°)	3°/6°	3°/6°	3°/6°	3°/6°	3°/6°	3°/6°
4.2 Closed mast height	h1 (mm)	2100	1790	2040	2100	1790	2040
4.3 Free lift ***	h2 (mm)	-	-	-	-	1280	1530
4.4 Lift height	h3 (mm)	1560	2460	2960	1560	2460	2960
4.5 Extended mast height	h4 (mm)	2220	3120	3620	2220	3120	3620

\*\*\* With optional on request Free Lift (FLL) : values of y, l<sub>2</sub>, l<sub>1</sub>, Wa and Ast are increased by 40 mm.

F.A.C. s.r.l.  
Via A.Volta, 7/9 26837 Mulazzano - Lodi - Italia  
T. +39 02 98876 001 F. +39 02 98876 202  
info@fac-srl.com www.fac-srl.com

Illustrations and technical data aren't binding  
and the firm can make any change without notice.



SBC

<b>Identification</b>	1.1	Manufacturer	FAC s.r.l.		
	1.2	Type	SBC (Q = 1,2 - 1,5 t)		
	1.3	Drive	electric		
	1.4	Type of operation	pedestrian		
	1.6	Load centre distance	c (mm)	600	
	1.8	Load distance, centre of drive axle to fork	x (mm)	150	
	<b>Wheels, Chassis</b>	3.1	Tyres	polyurethan	
		3.2	Front tyres size	(mm)	250 x 100
		3.3	Rear tyres size	(mm)	200 x 80
3.5		Wheels number front/rear (x = driven wheels)		1x+2	
3.7		Track width, rear	b11 (mm)	768	
<b>Basic Dimensions</b>		4.9	Tiller height in drive position min/max	h14 (mm)	1010/1570
		4.15	Forks lowered height	h13 (mm)	40
	4.21	Overall width	b1 (mm)	870	
	4.22	Forks dimensions	s/e/l (mm)	35/100/1200	
	4.23	Fork carriage in compliance with DIN 15173 Classe/Form A, B		FEM II A	
	4.25	Width over forks	b5 (mm)	200/620	
	4.31	Must ground clearance (with load)	m1 (mm)	50	
	4.32	Ground clearance, centre of wheelbase	m2 (mm)	40	
	<b>Performance data</b>	5.1	Travel speed, laden/unladen	km/h	3/5
		5.2	Lift speed, laden/unladen	m/s	0,11/0,21
		5.3	Lowering speed, laden/unladen	m/s	0,1/0,2
		5.8	Max. gradient performance, laden/unlader	%	4/6
		5.10	Service brake		electric
		<b>Motor</b>	6.1	Drive motor rating S <sub>2</sub> 60 min	Kw
	6.2		Lift motor rating at S <sub>3</sub> 15%	Kw	2,2
6.3	Battery acc. To DIN 43531/35/36 A,B,C			no	
6.4	Battery voltage, nominal capacity K5		V/Ah	24V/160-240 Ah	
6.5	Battery weight		Kg	170/210	
<b>Others</b>	8.1	Battery dimensions	L/P/H (mm)	810/210/450	
	8.1	Type of drive control		electronic	

	MODEL	1612	2512	3012	1615	2515	3015
1.5 Capacity, load	Q (t)	1,2	1,2	1,2	1,5	1,5	1,5
1.9 Wheelbase	y (mm)	1150	1150	1150	1454	1454	1454
2.1 Service weight	Kg	1595	1650	1670	1600	1660	1680
4.1 Lifting assembly tilting (forward/backward)	Grad (°)	3°/6°	3°/6°	3°/6°	3°/6°	3°/6°	3°/6°
4.2 Closed mast height	h1 (mm)	2100	1790	2040	2100	1790	2040
4.3 Free lift ***	h2 (mm)	-	1280	1530	-	1280	1530
4.4 Lift height	h3 (mm)	1560	2460	2960	1560	2460	2960
4.5 Extended mast height	h4 (mm)	2220	3120	3620	2220	3120	3620
4.19 Overall length	l1 (mm)	2710	2710	2710	3014	3014	3014
4.20 Length to face of forks	l2 (mm)	1510	1510	1510	1815	1815	1815
4.34 Aisle width for pallets 800x1200 lenghtways	ast (mm)	3025	3025	3025	3325	3325	3325
4.34 Aisle width for pallets 800x1200 lenghtways '	ast (mm)	3585	3585	3585	3885	3885	3885
4.35 Turning radius	wa (mm)	1415	1415	1415	1715	1715	1715

\* Aisle width with stand-on platform (optional on request)

\*\*\* With optional on request Free Lift (FLL) : values of y, l<sub>2</sub>, l<sub>1</sub>, Wa and Ast are increased by 40 mm.

F.A.C. s.r.l.  
Via A.Volta, 7/9 26837 Mulazzano - Lodi - Italia  
T. +39 02 98876 001 F. +39 02 98876 202  
info@fac-srl.com www.fac-srl.com

Illustrations and technical data aren't binding  
and the firm can make any change without notice.